

BURG®

mechanical
LOCKS

Contents

p. 04 - 05	Good reasons
p. 06 - 07	One system for all
p. 08 - 11	Cam locks
p. 12 - 17	Sash locks
p. 18 - 23	Handle systems
p. 24 - 35	Code locks
p. 36 - 39	Coin deposit locks
p. 40 - 41	Turn and push cylinders
p. 42 - 43	Furniture locks
p. 44 - 47	Custom solutions





BURG®



Good reasons



We develop, manufacture and sell.

Whether with key or electronic - with us you get development, production, assembly and service from a single source.



We are close by.

Many of our solutions are produced in Hagen, in the Ruhr area. They are available from stock for customers and their requirements.



We make it fit.

Our solutions enable seamless integration into many existing security infrastructure.



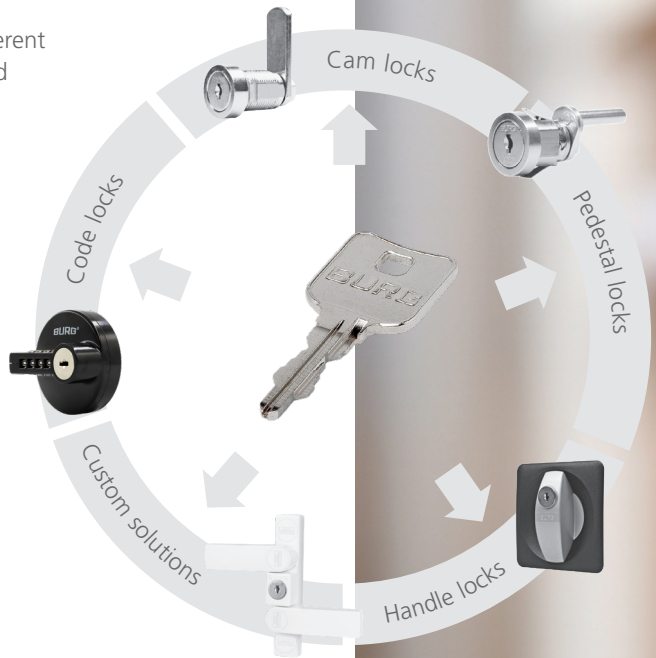
We supply durable solutions.

Whether manual or automated, BURG manufactures according to the high requirements of DIN ISO 9001:2015.

One system for all

The single-key system allows different locking systems to be opened and locked with the same key, whether cam lock, handle system or window fitting.

Compact stator inserts made of Zamak also allow the system to be easily integrated into your individual special solutions, even made of plastic.

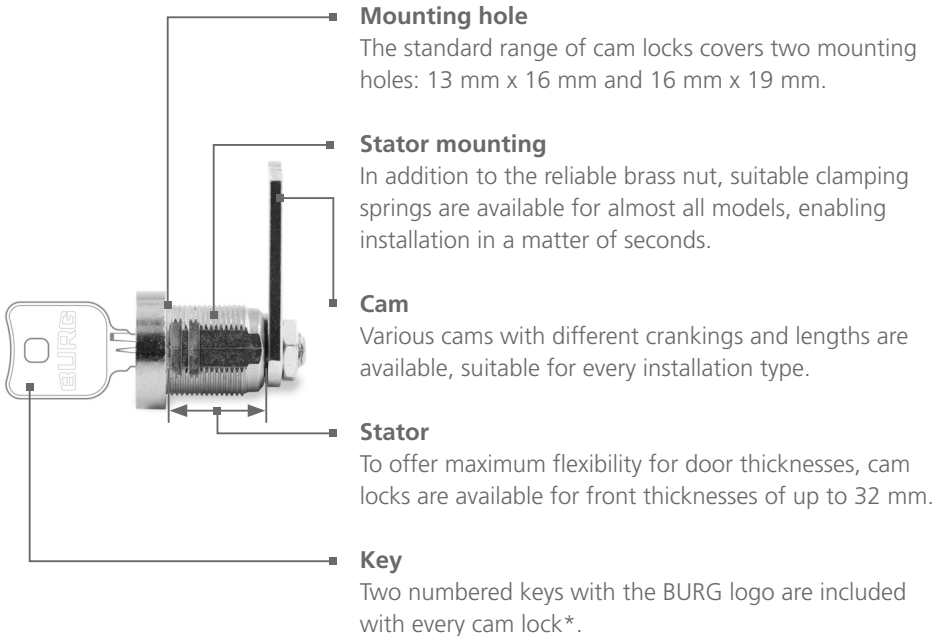


BURG®



Cam locks

Different applications - smart protection.



BURG®



H2A key type E / F



H4J key type X



This proven cam lock H2A is perfect for the smallest installation space requirements from 0.8 mm front thickness, such as hygiene dispensers or letterboxes.

The H4J enables 4,000 lock combinations, can be combined with the BURG furniture lock range and allows a wide range of customization options.

	H2A	H4J
mounting hole	13 mm x 16 mm	16 mm x 19 mm
door thickness	0,8 - 9 mm	11,5 mm
stator length	up to 16 mm	up to 20 mm
possible closures	E ¹ - 150 / F ¹ - 2,000	4,000
locking direction	180° ²	180°

H4E key type V



The H4E cam lock offers increased security thanks to more tumblers and, with an optional 32 mm stator length, is also ideal for thicker furniture fronts.

H4E

16 mm x 19 mm

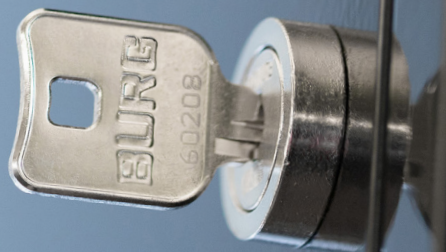
11 mm / 24 mm

up to 32 mm

2,000

180°

BURG®





Sash locks

Effective and flexible locking of hinged doors and drawers with a wide variety of padlocks.

Wide range of applications

Sash locks enable hinged doors and drawers to be secured. They can be combined with matching padlocks thanks to a hasp in the sash lock. This locking system combination is particularly popular in changing rooms, as it is a cost-effective and reliable way of keeping personal items safe.

Perceptible security

As robustness is particularly important for resistance to vandalism, many BURG locker locks are made of solid die-cast zinc. Some models offer increased security by allowing the knob to turn freely when locked, which makes it more difficult to apply force.

Large selection of cams

Depending on the variant, the door can be opened by turning the knob 90° or 180°. Like cam locks, BURG sash locks can be combined with all type B cams.

VDB



The VDB lock is the tried and tested classic with a chromed surface. It can be used in wooden and metal doors and can be fitted with either a nut or a clamping spring.

- simple installation
- sturdy zamak housing
- bracket diameter: max. 7.4 mm
- stator thread length: 11.5 mm
- individualization (customer logo), possible for higher quantities

V4U



The V4U with scratch- and corrosion-resistant plastic knob offers ergonomic locking with its free-turning function, for example in workshops or changing rooms.

- free rotation function
- simple assembly
- bracket diameter: max. 8.2 mm
- stator thread length: 11 mm
- flexible retrofitting

V4S



The V4S impresses with its solid knob made of robust zamak with a matt powder coating. The conical locking hasp also allows the use of larger padlocks.

- resistant, stable zamak housing
- simple installation and operation
- bracket diameter: max. 9.6 mm
- stator thread length: 10 mm
- conical locking pin

BURG®







BURG®





Handle systems

Steel furniture can be locked at several points.

Proven over millions of times

The handle system is probably the best-known standard lock used on tool and material cabinets. BURG has been manufacturing these mechanical handle solutions in various designs for decades. Handle system are available in both plastic and high-quality powder-coated die-cast metal.

Wide range of usage areas

Handle system can be used on doors hinged on the left or right. The changeover is made on the handle by simply repositioning. Whether in workshops, warehouses or production facilities, the BURG handle system has become a standard for leading company fitters.

Simple handling

The clear ergonomic shape enables easy operation and locking. The integrated cylinder allows a wide range of steel furniture to be locked securely, with keyed alike or keyed differently.

Quick installation

All you need to do to install the handle is simply push it in and the four retaining clip system secures it in position. The locking rods allow the handle system to be locked at two additional points (three-point locking) in addition to the cam.

GSP



GSC



	GSP	GSC
mounting hole	72 mm x 72 mm	72 mm x 72 mm
door thickness	0,7 mm - 1,2 mm	0,7 mm - 1,2 mm
material	plastic	plastic, zamak
locking direction	90° R / 90° L	90° R / 90° L
cam type	B, G	B, G

BURG®



GST



GSH



	GST	GSH
mounting hole	72 mm x 72 mm	72 mm x 72 mm
door thickness	0,7 mm - 1,2 mm	0,7 mm - 1,2 mm
material	plastic	plastic, zamak
locking direction	90° R / 90° L	90° R / 90° L
cam type	B, G	B, G

BURG®





Code locks

Keyless locking with code, for steel and wooden furniture.

Keyless

With the sPinLock series, you no longer need to worry about forgetting your keys. From now on, all you need is your own individual number. A key is only needed to make an emergency opening or to find a forgotten code.

A perfect fit

There is the perfect lock for every occasion, whether in hospitals and leisure facilities with a constantly changing public or in staff rooms with a fixed code.

Code variations

The sPinLock series includes various models, from the simple code cam lock with three digits to the four-wheel combination lock with automatic reset function and master key.

Different versions

In order to be able to use the right lock for every situation, there is a choice of different materials, designs and controls. Many with 16 mm x 19 mm mounting holes, like the BURG cam lock range.

sPinLock 100



Simple and minimalist: thanks to its compact dimensions, the lock blends in well with the surroundings. A ball catch ensures a high-quality feel.

- operation in private mode
- simple installation and operation
- 999 possible code combinations
- code finding function
- flexible retrofitting
- version for fronts up to 30 mm

sPinLock 200



With the sPinLock200, the control panel always remains horizontally aligned. The opening mechanism takes place via the external ring.

- operation in multi-user mode
- ergonomic recessed grips
- 9,999 possible code combinations
- emergency opening via master key
- high security against eavesdropping and no noise generation

BURG®





BURG®

sPinLock300

Private mode



Multi-user mode



The sPinLock300 combines security with design. Thanks to the integrated code scrambling function, the number wheels automatically reset to 0-0-0-0 when opening and closing. This means that the user code entered remains invisible and cannot be traced by unauthorized persons.

- code scrambling function for added security
- multi-user mode version
- private mode version
- flexible retrofitting (16 x 19 mm mounting hole)
- easy installation and operation
- sturdy die-cast zinc housing
- master key for mechanical emergency opening
- for left- or right-hinged doors

BURG®



sPinLock410



The sPinLock410 has a painted metal housing made of zamak, is easy to retrofit and enables code finding via master key. Ideal for changing rooms and fire department lockers.

- operation in private mode
- sturdy zamak housing
- emergency opening via master key
- 9,999 possible code combinations
- code finding function
- suitable for fronts up to 19 mm

sPinLock420



The sPinLock420 impresses with its lacquered zamak housing, ergonomic knob (60 mm) and interchangeable cylinder core (X system). It allows codes to be assigned without an additional tool.

- operation in private mode
- ergonomic rotary knob
- thanks to free-rotating knob, no force application possible
- emergency opening via master key
- 9,999 possible code combinations
- suitable for fronts up to 19 mm

BURG®



sPinLock510



The sPinLock510 impresses with its compact dimensions, a rotary knob with a non-slip polymer coating and clearly visible position symbols. It enables simple code finding via master key.

- operation in private mode
- suitable for wooden and metal doors
- rubberized rotary knob
- simple installation and operation
- emergency opening via Masterkey
- 9,999 possible code combinations

sPinLock700



The sPinLock700 fits almost flush into the front, whether in steel or wood. Users can assign a unique code to the locker - ideal for frequent users.

- operation in multi-user mode
- automatic user code scrambling (prevents reading)
- emergency opening via master key
- 9,999 possible code combinations
- different installation types available (left, right and drawer)

BURG®





Coin deposit locks

Providing security for changing safe deposit box users.

Versatile areas of installation

Proven for decades, coin deposit locks have found a firm place in dry rooms such as gyms and museums as well as in wet areas such as wellness spas, swimming pools and saunas.

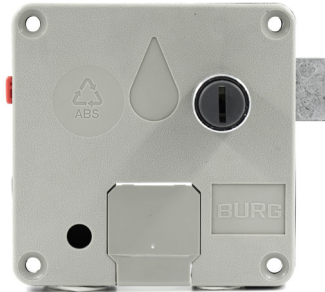
Intuitive use

Outstanding flexibility for lockers of all kinds. The individual keys no longer have to be handed to users and lockers can easily be used by different people within short periods of time. Only one coin (€1 or 50 cents) is required to lock the locker. It can also be used with an optional plastic chip.

Simple installation and retrofit

The locking cylinder is inserted into the door fitting with a 23 mm installation hole and fixed in place with the 4 wood screws supplied. If a key is lost, a new replacement cylinder can be ordered and fitted quickly and easily.

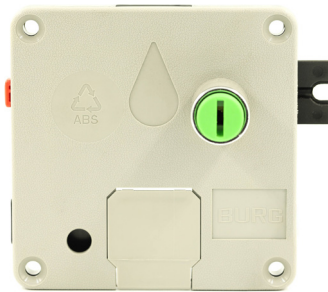
ECO



Security has priority, especially with locks where there is a constant change of use. Unsuitable coins are rejected by the lock and fall directly into the coin collector.

- long service life thanks to sturdy ABS housing
- protection against key breakage due to high installation depth of the cylinder
- replaceable locking cylinder
- suitable for 1€ / 50ct coin

Aqua



Both the cam and the cylinder core are made of polyamide and are therefore optimally protected against corrosion and rust. This is particularly advantageous for changing rooms in outdoor or wet areas.

- cylinder core and cam made of polyamide
- protection against key breakage due to high installation depth of the cylinder
- replaceable locking cylinder
- suitable for 1€ / 50ct coin

BURG®





Turn and push cylinders

These security cylinders are used wherever a rotary movement needs to be blocked in the smallest of spaces, such as in door and window fittings.

Minimalist

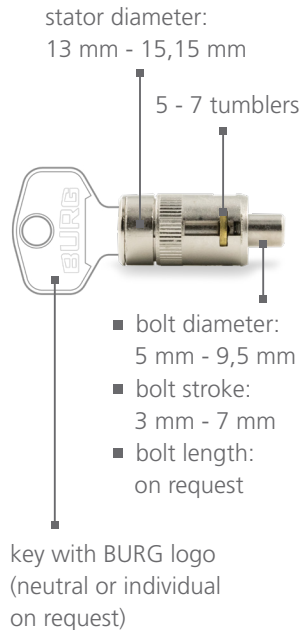
The cylinders are designed so that they do not detract from the appearance of the handle and window. They are characterized in particular by their proven mechanics.

Durable

Thanks to the stable materials from which the cylinders are made, a long service life is guaranteed. The cylinder is made of zinc and the bolt is made of steel.

Variety

Logo embossing, custom key range or individual key shapes are possible for larger quantities. In order to eliminate the need for a key, BURG also offers additional cylinders as a push-button solution.





Furniture locks

BURG offers a wide range of furniture locks for global markets. Manufacturers of wooden and glass furniture will find a central system for all solutions. Whether for the front or interior: the locks, knobs, cylinder cores and keys can be combined with each other as required. This opens up scope for manufacturers and meets the highest technical and design requirements.

Standard housing

All locks are equipped with a uniform housing. The basis for an intelligent combination system that enables the optional installation of interchangeable cylinder cores or rotary knobs for all standard locks.

Right and left usability

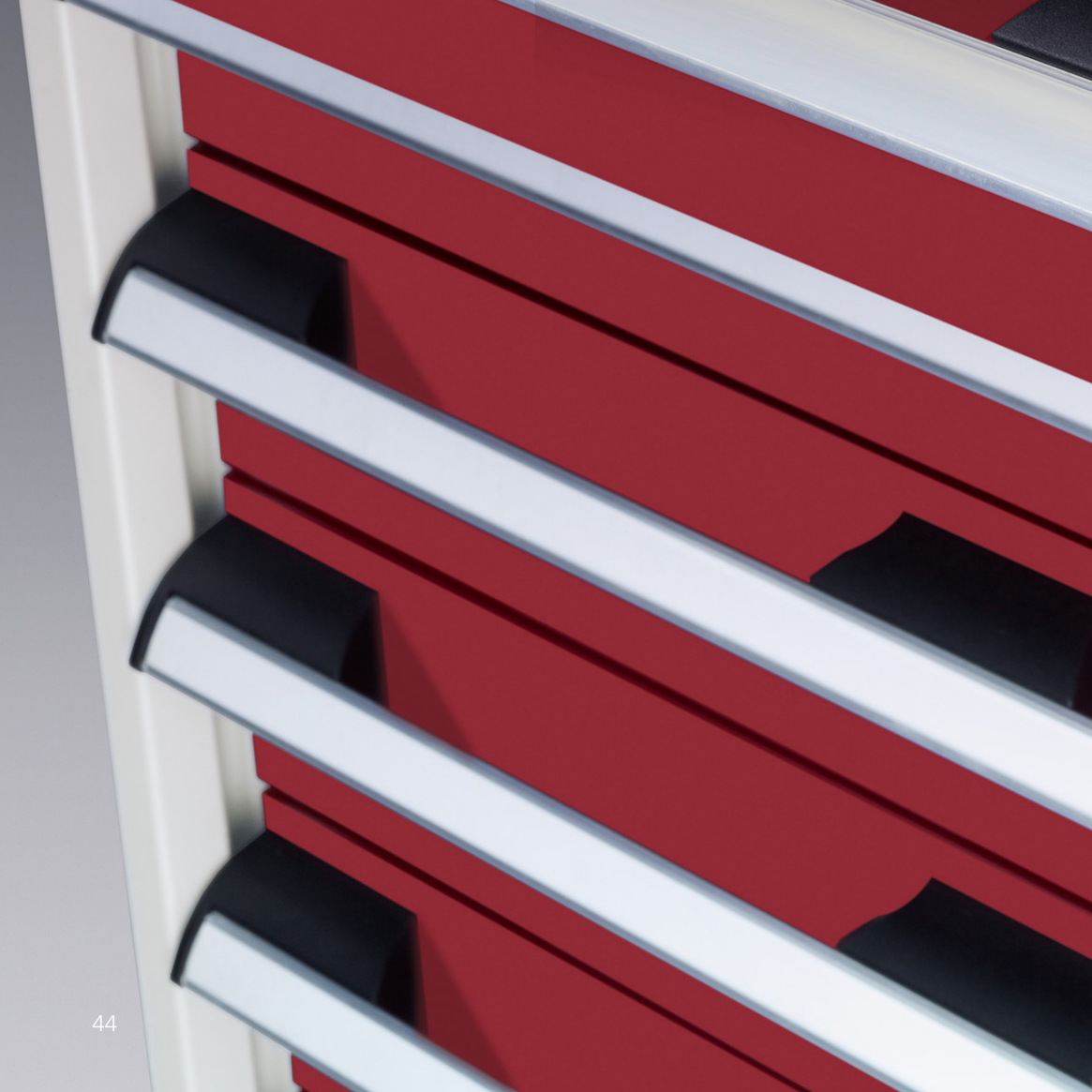
The BURG furniture locking systems can be installed in doors hinged on the left or right, and retrofitting is also possible.

Uniform drilling dimension

The uniform drilling dimension of 21 mm offers maximum flexibility for espagnolette and screw-on locks as well as for rotary and push cylinders.

Rod compatibility

Espagnolette locks and hooks are suitable for both standard rod diameters (6 mm / 8 mm).

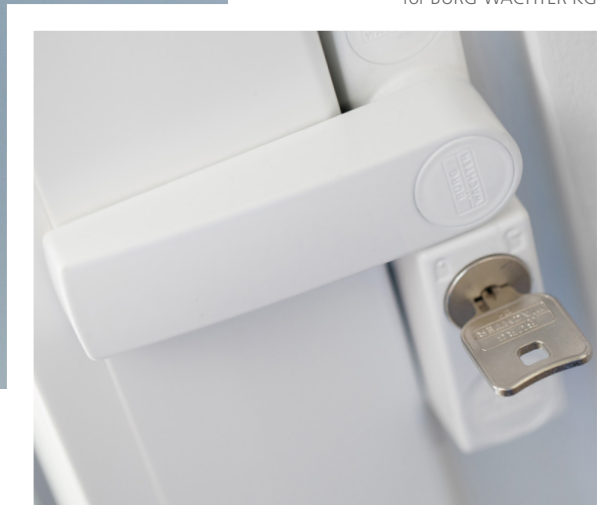


BURG®





Handle solution for
Lista AG (Switzerland)



Window security (WinSafe)
for BURG-WÄCHTER KG

Custom solutions

Are you looking for a partner to develop your “dream lock”? Then BURG is the right place for you. For over 50 years, we have been developing customized solutions for leading industrial manufacturers of metal products, office furniture, fittings and switch cabinets.

What sets us apart?

From A to Z

From the initial concept workshops to the finished product: BURG can take care of all phases of development and subsequent production, including all tools, molds and possible certification steps. Our customers benefit from our proven process and project management.

Know-how

We successfully implement solutions made of plastic, die-cast zinc (Zamak), steel and stainless steel. For all components that are not manufactured at the Hagen factory, we have long-standing partners who impress with their reliability and speed.

Mechanical and electronic expertise

We successfully implement hybrid product families consisting of both mechanical and electromechanical variants, which can also be retrofitted on request. Complementing your development with existing and proven hardware and software modules shortens the development time and brings cost benefits.

Image credits

P. 02 - 03	JFM Furniture
P. 04 - 15	BURG Lüling GmbH & Co. KG
P. 16 - 17	Kessler & Söhne, Württ. Eisenwerk GmbH & Co. KG
P. 18 - 27	BURG Lüling GmbH & Co. KG
P. 28 - 29	FASMA Srl
P. 30 - 34	BURG Lüling GmbH & Co. KG
S. 35	JFM Furniture
P. 36 - 42	BURG Lüling GmbH & Co. KG
S.42	FWO (Fonds voor Wetenschappelijk Onderzoek – Vlaanderen)
P. 44 - 45	Bott GmbH & Co. KG
S. 46	BURG Lüling GmbH & Co. KG
P. 49 - 51	Eurobox KG

BURG®





BURG®



BURG Lüling GmbH & Co. KG

Volmarsteiner Str. 52 • 58089 Hagen (Germany)
info@burg.de • +49 (0) 2335. 63 08-0

Follow us on LinkedIn
With our news and updates we
keep you always up to date.



www.burg.de