

BURG®

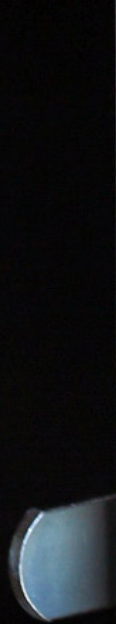
MAXIVO



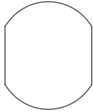
MAXIVO

The all-around solution for modern security. The Maxivo is the round retrofit version of the proven Combipad lock. A secure and convenient electronic locking solution designed specifically for indoor use. The Maxivo really comes into its own in high-traffic environments such as schools, workshops, or changing rooms. Thanks to the use of solid Zamak for all housing components, the lock is extremely resistant to mechanical stress and daily intensive use. The robust stainless steel buttons ensure consistently reliable code entry and durability, even with high user traffic.





Features



Easy retrofitting

The standardized 16x19 mm cutout enables fast replacement of mechanical locker locks, allowing for an easy upgrade. It is an ideal retrofit solution for a seamless and uncomplicated modernization of existing systems.



External battery replacement

The battery is replaced via a single screw on the outer surface of the housing. Since this is only possible when the lock is open, the lock interior remains completely protected from unauthorized access.



Stability

Solid zamak housing parts and fireproof stainless steel keys ensure extreme durability and long-term reliability even under the toughest conditions. Ideal for intensive use in high-traffic areas such as schools or workshops.



Flexibility (Door handing)

Adjustment for left- or right-handed doors is easily done via Torx screw when uninstalled. This allows flexible adaptation to the respective installation situation on site, significantly reducing the need to stock multiple different lock variants.

Smart Time Control

As an optional feature, the Maxivo's built-in real-time clock provides intelligent time management that significantly simplifies daily operations in high-traffic environments. In schools, workshops, or changing rooms, automatic access control ensures that access times are reliably adhered to, without any manual intervention. Once configured, the system runs autonomously around the clock, thereby enhancing security, efficiency, and reliability in daily operations.

Automatic Locking and Unlocking

The lock automatically locks and unlocks at preset times. The times can be set individually for each day of the week.

Usage Period

The lock can only be operated within a specified time period. Access is not possible outside of this time window.

Closing duration

The closing duration determines the maximum time the lock may remain locked after closing. Once this period expires, it opens automatically.



BURG Lüling GmbH & Co. KG
Volmarsteiner Str. 52 • 58089 Hagen (Germany)
info@burg.de • +49 (0) 2335. 63 08-0

Follow us on LinkedIn.
With our news and updates we
keep you always up to date.



www.burg.de