

BURG®

SMART
LOCKS



The 'O' in 'LOCKS' contains a circular BURG logo with a numeric keypad. The keypad is a 3x3 grid with the following layout:

BURG		
1	2	3
4	5	6
7	8	9
	0	✓

The 'C' in 'LOCKS' contains a smaller BURG logo. A smartphone icon is positioned to the right of the 'C', with its top edge overlapping the 'C' and its bottom edge extending below the 'S'.

Contents

p. 04 - 05	Good reasons
p. 06 - 19	Flexo
p. 20 - 27	Flexo Q
p. 28 - 29	Maxivo
p. 30 - 33	Combipad
p. 34 - 37	Corona
p. 38 - 39	Nova
p. 40 - 45	Niro
p. 46 - 49	TwinPad
p. 50 - 53	MasterPro
p. 54 - 55	Keypad Outdoor
p. 56 - 57	Intro
p. 58 - 69	Conexo
p. 70 - 71	RFID accessories
p. 72	Image credits
p. 74	Annotation resolution



BURG®



Good reasons

**We develop, manufacture and sell.**

Whether with key or electronic - with us you get development, production, assembly and service from a single source.

**We are close by.**

Many of our solutions are produced in Hagen, in the Ruhr area. They are available from stock for customers and their requirements.

**We make it fit.**

Our solutions enable seamless integration into many existing security infrastructure (access control, time registration).

**We supply durable solutions.**

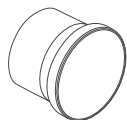
Whether manual or automated, BURG manufactures according to the high requirements of DIN ISO 9001:2015.

FLEXO



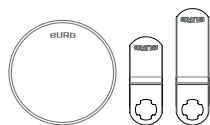
Flush-Fit

The Flexo is recessed in the furniture front and screwed in place with the Flexo.Ring. The lock stands out only minimally from the front with its discreet appearance.



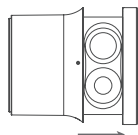
Retro-Fit

Retro-Fit installation makes it easy to replace existing locks with 16 mm x 19 mm mounting holes. Retrofitting is quick and cost-effective.



Flexibility

The Flexo can be used with all BURG steel cams. Installation does not differ from purely mechanical solutions.



External battery replacement

The batteries can be changed from the outside in both installation situations without having to unlock or dismantle the lock.



Retro-Fit*

BURG®



Flush-Fit*



Flexo.Cloud

The Flexo series is expanding to include a smart, cloud-based lock that takes management and operation to a new level. Thanks to secure end-to-end encryption and centralized cloud management, it offers maximum flexibility for different business concepts and creates optimal conditions for shared space solutions.

- flexible operation via RFID and the app
- lock management and configuration via the app
- secure end-to-end encryption
- transponder media (including ISO 14443A)
- integrated LED light ring
- long battery life (up to 15,000 locking cycles ¹⁾)
- external battery access and battery change without dismantling the lock



BURG®



Modes of use

The cloud products are innovative locking system solutions with outstanding cloud functionality, enabling convenient operation via card or app (iOS and Android). Operation via app, which also serves as a gateway, is particularly popular - a separate gateway is therefore not required. Specially requested functions can be adapted or newly integrated in the software.

- four different modes of use
- easy assignment of operation rights via the app
- logging of locking processes in the cloud
- RFID standards: MIFARE® Classic, MIFARE® DESFire® EV, LEGIC®, ...
- operation via Bluetooth® and RFID cards



Private mode light

The lock is permanently personalized and therefore permanently assigned to a user. Personalization and operation are only possible using the personalized user card. A user can use any number of locks in this mode with this user card.



Private mode (App)

The lock is permanently personalized in the app and can then be operated via the app or with the user card stored in the profile. Other users cannot operate the lock. This mode is a requirement for shared private mode.



Multi-user mode

Several users can use different locks. Operation is via a user card or smartphone. Saved locking information gets deleted during the opening process. One user card can lock several locks at the same time.



Shared private mode (App)

If the lock is in private mode, it can be shared with one or more people. The lock remains in the possession of the person to whom it is personalized. This person can assign and delete the usage rights in the app.



Flexo.RFID

The Flexo.RFID sets a new standard. It was developed for the leading RFID standards (MIFARE® Classic and MIFARE® DESFire® EV). The three authorization levels (master, manager and user) enable simple configuration via function cards.

- minimal front build-up of only 15mm (in flush-fit)
- up to 10 user cards can be stored in private mode
- integrated occupancy identification for MIFARE® Classic
- long battery life (up to 25,000 locking cycles ¹)
- battery warning (visual)
- external battery access and battery change without dismantling the lock
- simple adaptation to the installation situation thanks to adjustable cam (in 90° steps)

BURG®



reddot winner 2023



Flexo.Light

The Flexo.Light offers an entry-level solution for the digital locking of lockers and safe deposit boxes. The two authorization levels (master and user) offer simple and uncomplicated configuration.

- MIFARE® Classic / MIFARE® DESFire® EV
- up to 5 user cards can be stored in private mode
- mode switch card optionally available
- long battery life (up to 25,000 locking cycles ¹)
- battery warning (visual)
- external battery access and battery change without dismantling the lock
- simple adaptation to the installation situation thanks to adjustable cam (in 90° steps)





Flexo.Code

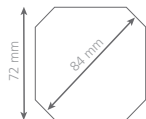
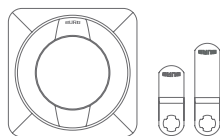
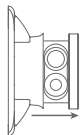
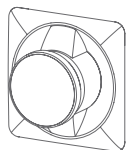
The Flexo.Code impresses with its versatile application and installation options. As an awarded design lock - Made in Germany - it offers the possibility of individual time configurations, such as the adjustable locking duration and up to 999,999 code variants.

- minimal front build-up of only 15mm (in flush-fit)
- high-quality keyboard with tactile feedback
- integrated real-time clock (RTC)
- long battery life (up to 25,000 locking cycles ¹⁾)
- battery warning (visual)
- external battery access and battery change without dismantling the lock
- simple adaptation to the installation situation thanks to adjustable cam (in 90° steps)





FLEXO



Established design

Designed on the basis of a mechanical handle system, the assembly and installation space have not changed. Electronics and batteries are integrated in the knob.

External battery change

The batteries can be changed from the outside without having to unlock or dismantle the lock—making maintenance much easier.

Flexibility

The locks can be adapted to the installation situation using adjustable cams (in 90° steps). Two- or three-point locking is also possible.

Standard installation

Designed for steel furniture, the Flexo Q can be easily installed or retrofitted thanks to the standard installation hole (diagonal: 84 mm).





Flexo Q.Cloud

The Flexo Q.Cloud is the cloud-based handle system from the Flexo series and combines proven design with smart, digital locking technology. It can be operated flexibly via RFID or the app, while the integrated LED light ring provides direct user feedback.

- flexible operation via RFID and the app
- lock management and configuration via the app
- secure end-to-end encryption
- transponder media (including ISO 14443A)
- integrated LED light ring
- long battery life (up to 15,000 locking cycles ¹)
- external battery access and battery change without dismantling the lock





Flexo Q.RFID

The Flexo Q.RFID is the digital handle system that is operated with RFID transponders such as cards, wristbands or chips. It impresses with its high-quality design and supports the leading RFID standards (MIFARE® Classic and MIFARE® DESFire® EV).

- up to 10 user cards can be stored in private mode
- integrated occupancy identification for MIFARE® Classic
- long battery life (up to 25,000 locking cycles ¹)
- battery warning (visual)
- external battery access and battery change without dismantling the lock
- simple adaptation to the installation situation thanks to adjustable cam (in 90° steps)
- high flexibility in the installation situation thanks to one-, two- or three-point locking



Flexo Q.Code

The Flexo Q.Code is the slim digital handle system with innovative and user-friendly operation via code entry. It combines the benefits of the mechanical handle system with the intelligent features and simple operation of the Flexo.Code.

- integrated real-time clock (RTC) for individually definable time settings
- high-quality keyboard with tactile feedback
- long battery life (up to 30,000 locking cycles ¹⁾)
- battery warning (visual)
- external battery access and battery change without dismantling the lock
- simple adaptation to the installation situation thanks to adjustable cam (in 90° steps)
- high flexibility in the installation situation thanks to one-, two- or three-point locking

¹ See page 74.



Maxivo.Code

The Maxivo.Code is the round Retro.Fit version of the established Combipad and stands for secure, convenient code locking technology for indoor use. It was specially designed for easy retrofitting and is made from high-quality materials. The Maxivo is a robust yet elegant solution for security.

- high-quality metal housing with fireproof stainless steel keys
- integrated real-time clock (RTC)
- integrated LED locking indication
- can be used in wooden and metal doors (indoor)
- flexible installation situation (right and left)
- easy to retrofit, e.g. to replace mechanical cam locks
- optionally available with code generator



Combipad

The Combipad sets the standard for the secure storage of valuables indoors thanks to its high-quality components. It impresses with its robust design and versatile range of functions for a wide variety of applications.

- high-quality metal housing with fireproof stainless steel keys
- integrated real-time clock (RTC)
- integrated LED locking indication
- latch system: door locks when pushed
- long battery life (up to 60,000 locking cycles ¹⁾)
- can be used in wooden and metal doors (indoor)
- flexible installation situation (right and left)





BURG®



Corona

The Corona is the robust RFID lock with ergonomic rotary knob for secure and convenient locking of lockers and secure storage compartments. It offers a high degree of flexibility in operation with RFID transponders such as cards, wristbands or chips and impresses with its versatile configuration options.

- RFID standards: MIFARE® Classic / MIFARE® DESFire® EV
- high quality housing thanks to stable Zamak components
- integrated LED locking indication
- latch system: door locks when pushed
- simple retrofitting, e.g. to replace mechanical locks
- available as a wirelessly networked version „B-on-air“ (EnOcean protocol)





Flexible security with B-on-air



Central administration

Less personnel effort, thanks to the management of the locking system infrastructure via the cloud in your browser.



Flexibility

Allows easy retrofitting of existing locker systems without having to install cables or replace the systems.



Transparency

Live messages provide an overview of the status, operation and utilization of the locking systems at all times - even on the move. A low battery status or tampering attempts trigger an alarm.



BURG®



Availability information

Available compartments can be shown centrally, e.g. on a reception screen. This reduces the time spent searching, especially at busy times.



Evaluability

B-on-air records opening and closing processes. Statistics on the usage behavior of an individual compartment or the entire system can be conveniently evaluated.



Updatability

Networking the locking systems makes it possible to update the settings or the locking system software, e.g. when new firmware is available.

Nova

Developed in cooperation with the company USM, the electronic design lock NOVA is the complement for all standard installation holes. Proven RFID technology, supplemented by operation via smartphone app, makes the NOVA the perfect security solution in all smart office areas.

- operation via the USM/ or BURG app
- LEGIC® chip (SM-6300)
- user feedback through integrated LED illuminated ring
- suitable for all installation situations and doors made of wood, steel or HPL
- long battery life (up to 30,000 locking cycles ¹⁾)
- secure, external battery access and battery change without dismantling the lock
- simple adaptation to the installation situation thanks to adjustable cam (in 90° steps)



NIRO



Retrofit-Ready

In addition to the standard 16 mm x 19 mm mounting hole, a fastening screw provides additional stability and a higher degree of protection.



Flexibility

The locks can be adapted to the installation situation by an adjustable plate, for both right and left-hinged doors.



Mechanical master key

The Niro offers the option for mechanical emergency opening via master key.



IP65

IP65

Thanks to the sealing mat on the back, the Niro series meets the IP65 standard. This means that the locks can also be used outdoors and remain protected from the effects of dust and water jets.



BURG®



Niro.RFID

Operation with proven RFID technology with the standard MIFARE® Classic or MIFARE® DESFire® EV. Intelligent functions such as occupancy detection, battery warning, LED and sound signals as well as the three authorization levels (master, manager and user) round off the performance package.

- occupancy identification on MIFARE® Classic
- three authorization levels (master, manager and user)
- use for left and right-hinged doors *
- IP65 protection
- battery warning (visual and audible)
- optional mechanical emergency opening via master key
- easy to retrofit, e.g. to replace mechanical locks





Niro.Code

Thanks to the simple and intuitive operation via code entry and the two operating modes “private” and “multiuser”, the Niro is a simple and uncomplicated locking system solution. Configuration is quite simple via the keypad.

- simple and intuitive operation and configuration
- can be used for left and right-hinged doors *
- IP65 protection
- battery warning (visual and audible)
- optional mechanical emergency opening via master key
- easy to retrofit, e.g. to replace mechanical locks

* Optionally available in horizontal (DIN right/DIN left).

BURG®





TwinPad

The electronic furniture lock TwinPad can be operated by entering a code or using RFID transponders such as cards, wristbands or chips. The TwinPad supports the most common RFID standards (MIFARE® Classic and MIFARE® DESFire® EV).

- slim front unit with metal frame (only 13 mm build-up)
- dual mode: operation via code and RFID
- up to 10 user cards can be stored in private mode
- latch system: door locks when pushed
- flexible installation situation (right, left and drawer)
- emergency power supply via USB-C port
- adjustable volume of the signal tones







MasterPro

The MasterPro doesn't have to hide, but it does. The small, invisible electronic furniture lock can be installed wirelessly in cabinets, drawers, single-leaf hinged doors and sliding doors made of wood or glass.

- not visible on the outside of the door
- proven RFID technology (MIFARE® Classic)
- up to 30 user cards can be stored in private mode
- integrated occupancy identification in multi-user mode
- convenient size (61 x 61 x 22 mm)
- use via battery or power supply unit with micro USB connection
- opportunity to LED signaling on the front via light guide





BURG®

Keypad Outdoor

The Keypad Outdoor is a compact electronic code lock with a vandal-proof silicone keypad. The innovative housing protects the lock against weather and environmental influences. Whether rain or water jets - the housing provides effective protection against moisture. The innovative seals also prevent the ingress of dust or sand.

- IP54 protection (protection against splash and salt water)
- UV and corrosion protection
- compact dimensions and easy installation
- integrated LED locking indication
- battery life (up to 45,000 locking cycles¹)
- battery warning (visual)
- possibility of emergency opening via master code

¹ See page 74.



Intro.Code

The Intro.Code is simple and self-explanatory. It provides an easy introduction to convenient electronic locking of furniture with a numerical code. The range of functions has been deliberately kept free of any unnecessary frills. It is simple and straightforward.

- external battery access and battery replacement without dismantling the lock
- emergency power supply via micro USB port
- battery warning (visual and audible)
- hidden opening code through fake code function
- flexible installation (right and left)
- easy to retrofit, e.g. to replace mechanical cam locks





CONEXO

The smart solution for modern locker management

Flexible. Secure. Digital.

The Conexo smart locker solution simplifies your everyday life in an intelligent way. As a central platform for modern locker management, Conexo can be used flexibly – both indoors and outdoors.

The system impresses with its user-friendly, low-maintenance hardware and powerful IoT software, which optimizes processes and enables future-proof workflows.

Conexo can be individually adapted to on-site requirements and integrates seamlessly into existing environments. Whether in offices, workshops, educational institutions, residential complexes, shopping centers, or as a parcel and click & collect solution, Conexo offers maximum freedom and convenience for a wide range of application scenarios.



Use cases



Smart Office

Smart office and desk sharing concepts. Optimized processes and simplified workflows in office facilities. Permanently assigned or shared lockers, permanent or limited use.



Changing rooms

Whether in staff areas, swimming pools, or other changing rooms, a secure storage place for personal belongings can be provided everywhere.

IT service point

The IT service point is a central point of contact for services in intralogistics. Devices can be stored and handed out securely – around the clock. Profitable functions: usage logs and automated notifications.



Material dispensing

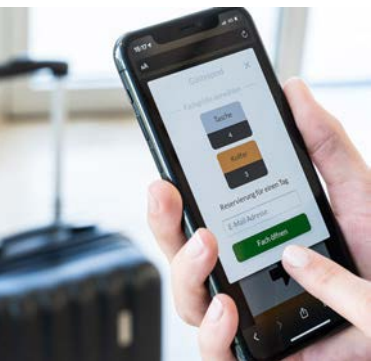
Work materials and operating resources such as tools, packaging, and much more are dispensed securely and in a structured manner, while automated material dispensing remains transparently traceable.

Click & Collect

Pick-up and return stations enable maximum flexibility and convenient, time-independent goods collection. Various system variants are possible—whether for indoor or outdoor areas, freestanding or integrated systems.

Internal mail

Internal mail and goods distribution as well as parcel shipping are handled efficiently and at any time by an intelligent system. Secure handover, especially in times of home office and desk sharing.



Use cases

Smart City

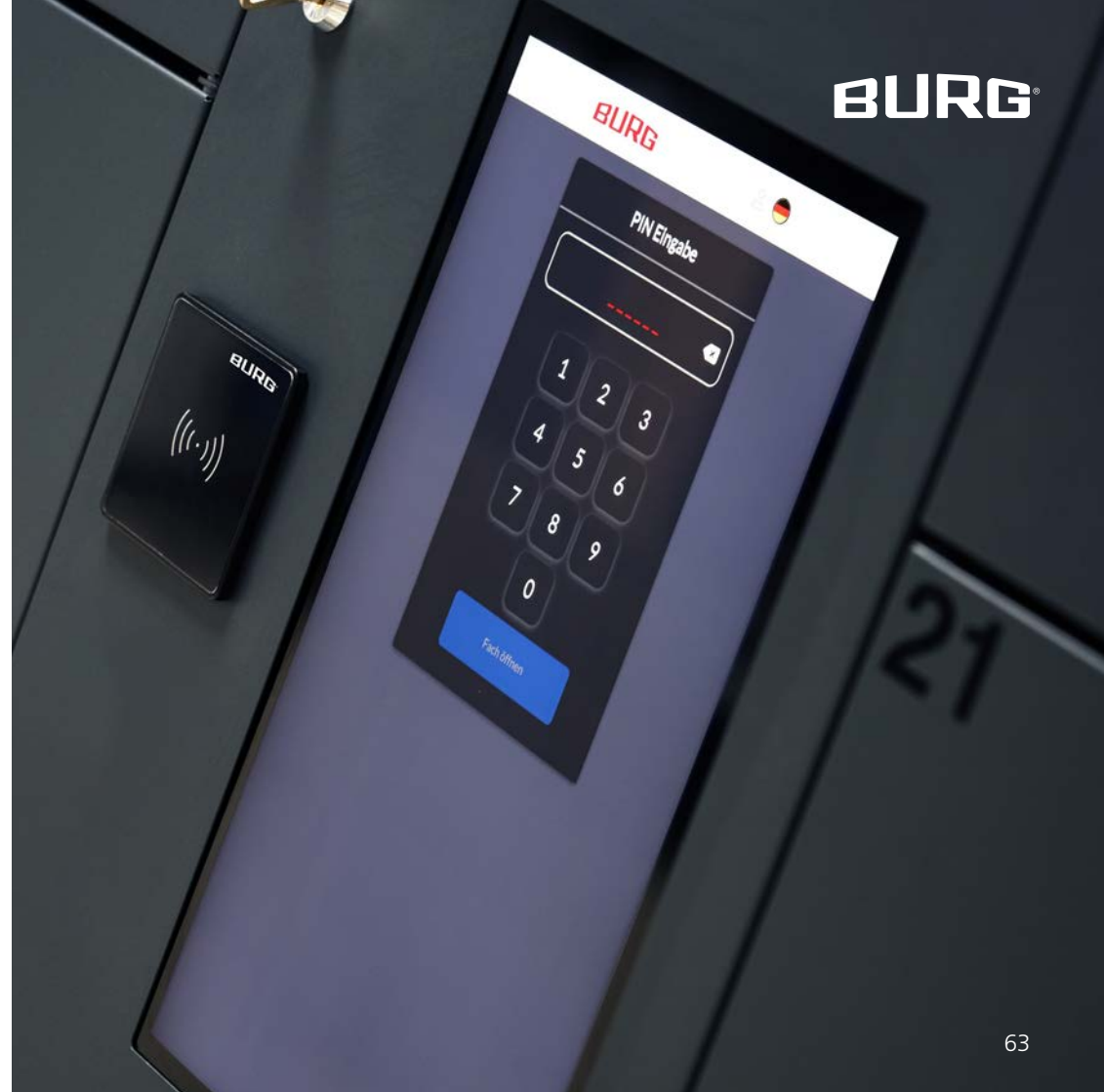
The Smart City version enables networked storage, charging, and rental stations. Integrated payment functions and transparent documentation support a wide range of applications.

Guest lockers

Secure and, above all, flexible storage for personal items can be installed in various guest areas. At the same time, it provides a transparent overview of occupancy and available lockers.

Special solutions

The Conexo smart locker system flexibly maps individual use cases. Thanks to its modular expandability, it adapts to a wide variety of requirements and application scenarios.





Conexo-System

Welcome to the future of convenience and efficiency!
The revolutionary Conexo Smart Locker system opens up a completely new way to simplify everyday life and increase productivity.

Developed as a central solution for a variety of application scenarios, the Smart Locker solution is not only flexible and expandable, but also extremely user-friendly and low-maintenance.

- application-specific software and features
- API interface
- modular and versatile in use
- flexible operation via RFID, QR code, barcode, smartphone or tablet
- for both indoor and outdoor use
- possibility of various payment functions (e.g. PayPal or credit card)



Conexo.Lock

The Conexo.Lock is a software-controlled locking unit for modern furniture, lockers, and shared solutions. Thanks to its compact design and sophisticated quick-mounting system, the lock is particularly easy and secure to install. An integrated LED status indicator on the lock and, optionally, on the front panel provides clear visual feedback for users.

- push-to-open/pop-open function
- software-controlled locking unit
- visual status indicator on the lock (LED)
- compact flex locking unit with height tolerance compensation
- emergency opening via mechanical emergency opening lever
- simplified installation thanks to quick-mounting plate with click function





RFID accessories

BURG transponder medias are available in the most common RFID standards such as 125 kHz (T5577), MIFARE® Classic and MIFARE® DESFire® EV.



Transponder cards

Transponder cards are used as a key replacement. RFID locking systems can thus be operated easily and conveniently. Simply holding them in front is enough for locking and opening.



Transponder chips

The key replacement on the key chain. The transponder chips have the same function as transponder cards and can also be securely attached to the key ring.



Transponder wristbands

RFID wristbands, which can be worn comfortably on the wrist, offer maximum flexibility. Wristbands in various sizes are used particularly in the fitness and wellness sector.



Release-Box (MIFARE® Classic)

The Release Box quickly and securely deletes data records such as the occupancy identification, locker number and time stamp from transponder medias. Simply placing the transponder media is sufficient.

- secure deletion of data records
- integrated LED indication
- adjustable deletion sectors (with function card):
 - all sectors
 - only individual sectors
- use via battery or power supply unit with micro USB connection
- convenient size (61 x 61 x 26,5 mm)



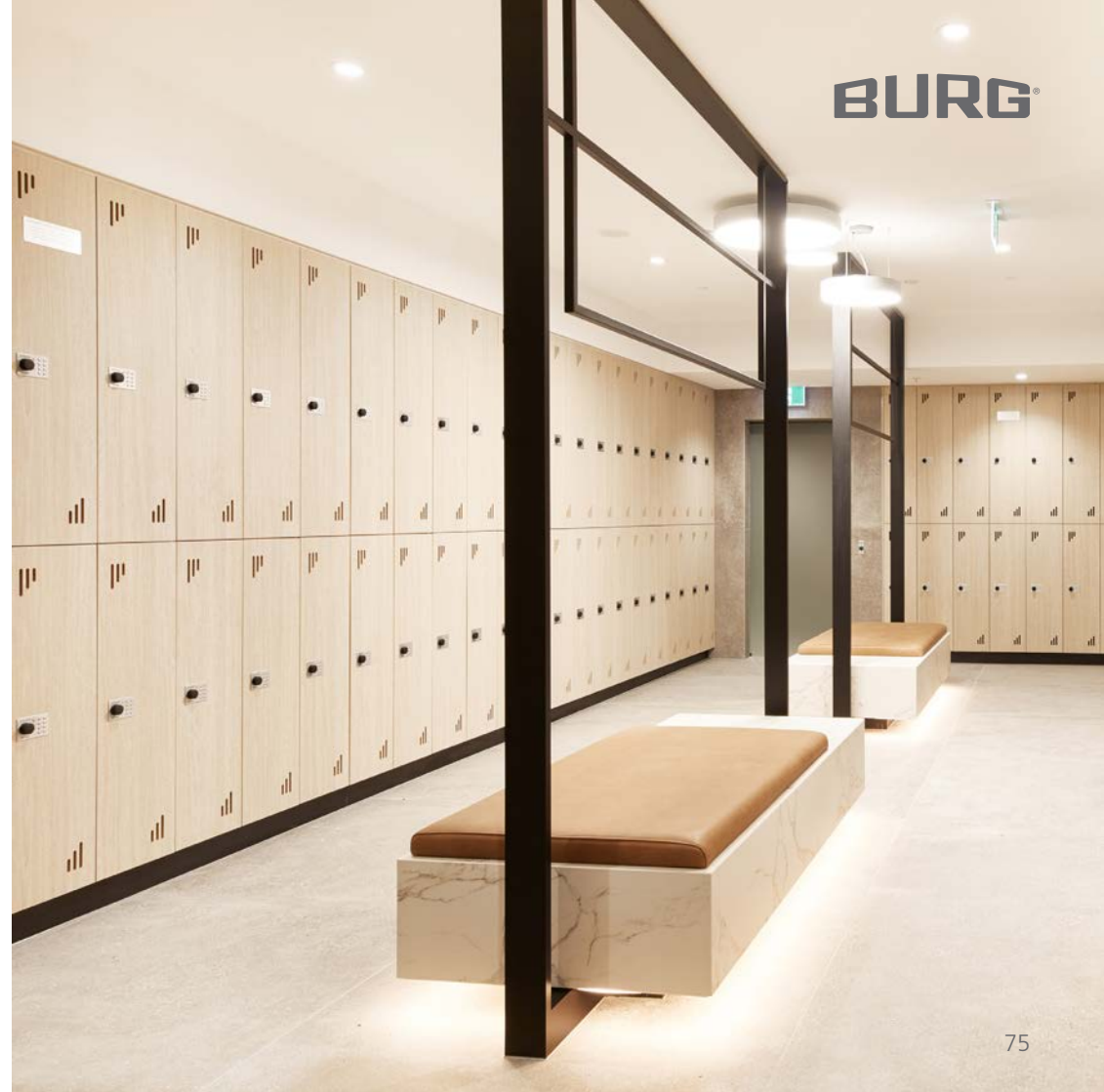
Image credits

p. 02 - 03	Narbutas Lietuva
p. 04 - 17	BURG Lüling GmbH & Co. KG
p. 18 - 19	Company „Fracht“ office in Riga (LV), The project implemented by „Narbutas Lietuva“, Photographer: Donatas Vaičiulis
p. 20 - 31	BURG Lüling GmbH & Co. KG
p. 32 - 33	Five at Heart
p. 34 - 47	BURG Lüling GmbH & Co. KG
p. 48	doctolib Frankreich ausgestattet durch cider france
p. 49	Narbutas Lietuva
p. 50 - 51	BURG Lüling GmbH & Co. KG
p. 52 - 53	Narbutas Lietuva
p. 54 - 57	BURG Lüling GmbH & Co. KG
p. 58 - 65	Pareva GmbH (teilweise Anpassungen durch BURG Lüling GmbH & Co. KG)
p. 66 - 67	BURG Lüling GmbH & Co. KG
p. 68 - 69	Pareva GmbH
p. 70 - 71	BURG Lüling GmbH & Co. KG
p. 73	Activ Forum Leipzig
p. 75	Five at Heart



Annotation resolution

- 1 Test value for consecutive locking cycles with one set of VARTA batteries. In everyday use, factors such as usage profile, temperature-dependent selfdischarge, battery quality, and the standby current of the electronics limit the achievable number of cycles. The actual number may therefore vary. For further information, see: <https://www.burg.de/en/products/downloads/information-of-battery-life>
- 2 Vertical locks adjustable via locking direction disc for DIN right and DIN left. Horizontal locks available separately for DIN right and DIN left.



Follow us on LinkedIn
With our news and updates we
keep you always up to date.



BURG Lüling GmbH & Co. KG

Volmarsteiner Str. 52 • 58089 Hagen (Germany)
info@burg.de • +49 (0) 2335. 63 08-0

www.burg.de