

**BURG®**

**Security at every level.**  
Industrial cylinders from BURG.



BS-J456-H18



BS-ZV52-101



BS-W-S-GS



BS-W-S-HS



BS-W-S-ZV



BS-Z 456-D30

# BURG closes a security gap.

## Lock security is always a question of proportionality.

You don't need an electronic lock for a paper towel dispenser, but you do to protect your server. BURG provides you with a high-quality product for any application.

Through the incorporation of pin cylinders in our product range, we are able to offer you a wide bandwidth of possibilities at any security level. Plus, with this flexibility, you are given the opportunity to define your security requirements completely individually.

This is because, at BURG, you will find everything that is important for developing the optimum locking system solution: more than 100 years of experience, the know-how and creativity of a versatile team of developers, combined with the openness for new technologies, and an innovative spirit. We have strong supply partnerships and individual consulting from a committed sales team with the objective of finding the best solution for each customer.

The result: locking systems customised for your needs that put convenience and efficiency together.

## What do we mean when we talk about security?

- **Security against break-ins:** Solid construction and high-quality materials make forcing the lock difficult.
- **Opening security:** A construction that makes forcing the lock difficult with the appropriate accessories.
- **Lock picking security:** A level of precision that prevents locking with anything other than the associated keys, e.g. the well-known skeleton key.
- **Key security:** Through patents and technical protection, only authorised persons are able to obtain a key that belongs to a system.
- **Security through flexibility in the Changing System:** The ability to interchange cylinder cores makes it possible in case of doubt to use a core with different coding and thereby render the old keys useless.

## The “Burg process”.



### Getting to know each other

At this point, you get to know us: as a versatile partner for product-specific solutions. As a creative collector of ideas for the individual requirements of our customers. And as competent experts who do not hastily give up on a project.



### Advising

Is this OK, or is it better the other way? Working together with you, we develop solutions to expand product features, for value-added strategies and to achieve an increase in efficiency.



### Supporting

We would like to be more than just your supplier. That's why we also look at available products and processes and define goals for product optimisation. Because you should also be able to benefit from our expertise.



### Research and development

Those who already know a lot are always hungry to learn more: the creativity of our design engineers is at your disposal, so that your project is ergonomically optimised and pleasing to the touch, with good design through clear use of form; with the implementation of new materials for the best technical solution, and with approaches that go beyond pure mechanics, all with a clear goal: Innovation.

### Production

Our production is definitely worth having a look at. Leading edge equipment, high manufacturing standards and a comprehensive quality assurance procedure ensure that your orders are completed reliably. And by the way, this doesn't only apply to locking systems! With our competence in zinc die-casting we are also at your disposal in other areas.



### Mounting

What comes out of the machine is by no means finished. We also undertake the finishing process, for example, the final assembly of pre-assembled components. And the process is completely personalised and adapted to your projects.



### Logistics

Low stock levels and yet no supply shortfalls? Here you can rely on us. Because just-in-time delivery, kanban system and supply chain management are not simply buzzwords to us; they are part of our daily routine.



### After sales

Even after delivery, our job is not finished. Now is when our work really starts! Because by sharing experiences with you and by working together with you to consider how better to optimise the marketing and commercialisation, the term 'supply partner' takes on a much more complex meaning.



### Customer satisfaction

The goal is achieved – and motivation for the next round? Because for us, at any rate, it is worth making all that effort when we receive positive reaction from our customers about our work.



Claim: especially high.  
 Locking system: especially high-quality.

## Fixed Systems

May we introduce our pin cylinder variations? Through the use of wear-resistant materials, the extremely high number of different profiles and long-term patent protection, our stringent quality requirements are immediately noticeable. The high precision with which each individual cylinder is made is comparable to the manufacturing of clockworks. All of this ensures that access is reliably prevented for the unauthorised, and that it is as convenient as possible for the authorised.

Different models make it possible for you to use the optimum system for your security priorities. This also includes special adaptations and accessories that we will integrate entirely based on your specifications.

## Product examples

### Cam locks



**BS-J456-H18**

Finish, chrome, nickel  
 Fixing, nut M18 SW22



**BS-Z456-H24**

Finish, chrome, nickel  
 Fixing, nut M24x1 SW30

### Profile cylinder



**BS-Z452-1030**

Finish, chrome, nickel  
 Fixing, screw M5

### Turn-slide cylinder



**BS-Z456-D30**

Finish-body, chrome, nickel



**H4V.21S**

Surface, chrome, available with  
 5 or 6 pin tumblers



An overview of our industrial cylinders can be found on the Internet at: [www.burg.de](http://www.burg.de)

## Cylinder: interchangeable Security: constant

### Changing systems

Not every application needs locking systems that are highly complex. However, efficiency is always an issue. Therefore it is good if a system provides maximum flexibility in each phase of the project development – just like our industrial cylinders with an interchangeable system.

Specifically, this means the following: You can change your locking plan without any restrictions even beyond the start of the project. This is because our interchangeable cylinder can be replaced easily at any time, when expanding systems, for a changed application structure, for lost keys...

The benefits are so pleasantly obvious, like our flat profile keys: minimum stock, no committing to the originally defined locking plan, and individually interchangeable cylinders without any major installation effort. And, you no longer have to think about the costs that used to be incurred because of the necessity of a complete replacement in the event a key was lost.

- The S-Cylinder: Security and flexibility for low costs.
- The H-Cylinder: Security with patented key system, master-key system compatible.

### Product examples



#### BS-W-S-GS

Finish-body: PA black  
Handle, Zamak silver  
Cam type G, snap ring  
Locking movement 90° SA (L), 90° SA (R)



#### BS-W-S-ZV

Finish-body, chrome  
Locking movement 360°  
Fixing, nut M22x1 SW24  
Material thicknesses up to 15 mm



#### BS-W-S-HS

Finish-body, chrome  
Cam type B  
Locking movement 90° SA, 180° SA  
Fixing, nut M22x1 SW24  
Material thicknesses up to 15 mm



An overview of our industrial cylinders can be found on the Internet at: [www.burg.de](http://www.burg.de)

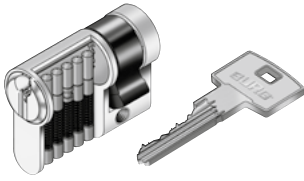
Safe is safe? We would like to differentiate here.

## BURG Cylinder classification

	Cylinder class 1	Cylinder class 2	Cylinder class 3	Cylinder class 4
Pin cylinder	■	■	■	■
<b>Opening security</b>				
Paracentric key profile	■	■	■	■
5 pin pairs			■	■
6 pin pairs	■	■		
Additional sensor elements (side sensor elements, locking bar, slider: Elements serve as manipulation protection. A minimum of two pins should be designed as anti-picking pins).	■	■		
<b>Security against break-ins</b>				
2 pin pairs made of tempered special steel	■	■	■	■
2 additional tempered steel pins in core and casing	■	□	□	□
Protruding, rotating steel disc	□			
Brass lock fixing nut, extra strong design	□	□	□	□
Fixing nut bar (2 pieces)	■	□	□	□
Reinforcing pin (brass) on rotor end piece	■	□	□	□
<b>Key security</b>				
Legally patent protected key profile (min. 12 years)	■	■	■	
Key profiles that are not commercially available	■	■	■	
Highest possible number of key profiles	■	■	■	■
<b>Lock picking security</b>				
High manufacturing precision with extremely low tolerances	■	■	■	■
Combinable paracentric key profile for master-key systems (multi-profile system)	■	■	■	■
Up to 16 tumbler elements possible	■	■		
<b>General</b>				
Master-key system compatibility	■	■	■	■

■ = Series □ = Option

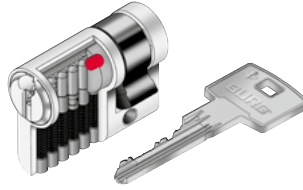
## Technical Information, Fixed Systems



### The standard is already extra-safe here.

Unbeatable against picking attempts: The paracentric key profile of our standard series keeps pilferers away. We recommend it both for single locks as well as master-key systems. It is available with 5 or 6 pins, of which the first and third pin pairs are made of special tempered steel as a standard. This provides high protection against being drilled open.

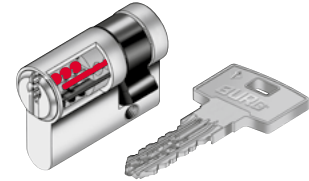
Suitable for **BURG** cylinder class 4.



### Z stands for additional ideas.

In addition to the standard, this system provides the highest sensing security and copy protection. To guarantee this, you have to have something up your sleeve. For example moving the key stop in the tip of the key. That way, there is no fixed starting point, which unauthorised persons need to map the key profile. Instead, the cylinder has a good 0.8 mm of play in the entry area, which can also be understood to be precision. In combination with the patented paracentric key profile and the security card, you are guaranteed that keys can't be copied without your approval.

Suitable for **BURG** cylinder class 3.



### The integral system. Everything is in it.

Even in the nicely shaped, extremely stable, patented, reversible key you can see that we mean something special by 'Integral'. It facilitates not only convenient handling, but also has quite a bit to do, because during a locking operation, it synchronises up to 16 active tumbler elements distributed over three angle levels, as well as two interlocking locking bars in one cylinder, which is already very stable due to its construction. This series is suitable for the highest security requirements.

Suitable for **BURG** cylinder class 2, optionally for cylinder class 1.

## Master-key system

In a master-key system, access can be defined over several hierarchy levels. Subsequent changes and modifications are easily possible using the BURG Changing System. Even electronic solutions are available.

### Master key (MK)

The master key is a key that is overriding across all group and single locks.

### Spare key

The lock number as well as a copy of the security card are needed to order spare keys.

### Security card

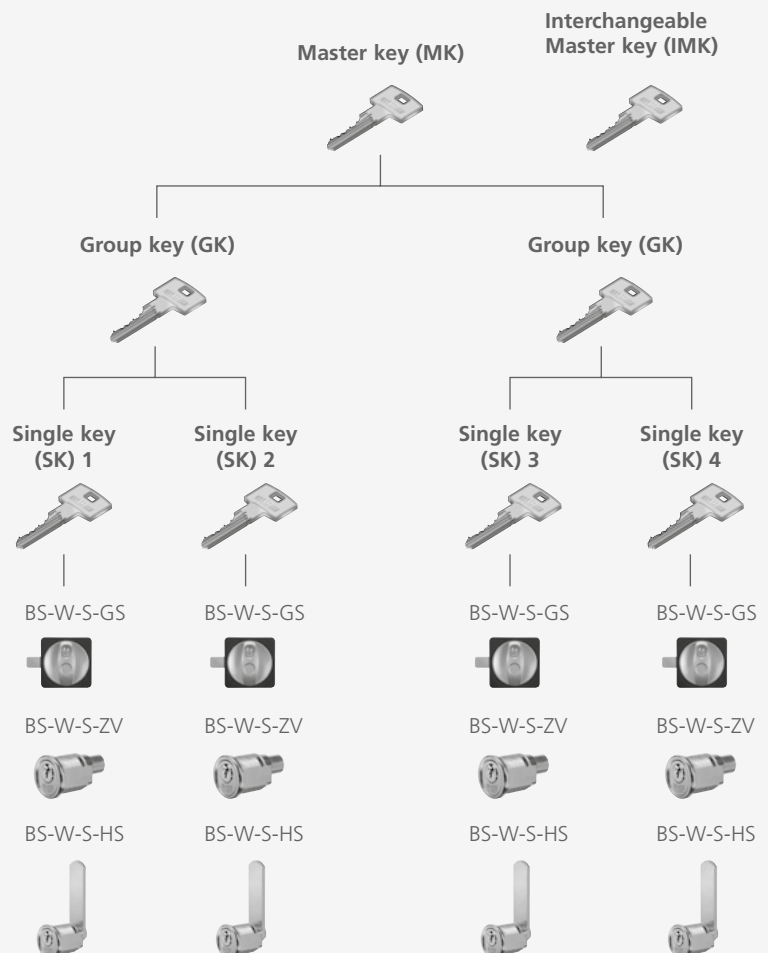
A security card is issued as proof of ownership for each master-key system. No replacement keys can be obtained without this security card.

### Interchangeable master key (IMK)

The interchangeable master key is necessary for subsequent installation or replacement of interchangeable cylinders within master-key systems.

### Interchangeable cylinder for locks incl. 2 keys

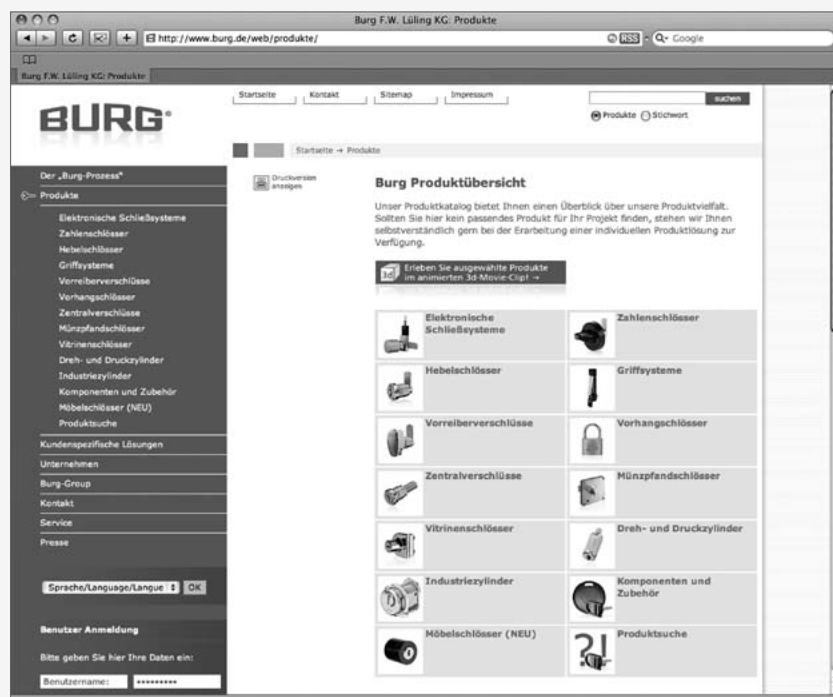
Interchangeable cylinder for subsequent installation or replacement of locks within master-key systems.



The complete BURG range,  
technical information and examples  
of customer-specific solutions  
can be found at **www.burg.de**

#### Products

- Electronic controls
- Combination locks
- Cam locks
- Handle systems
- Sash locks
- Padlocks
- Central locks
- Coin deposit locks
- Glass door locks
- Push and Turn-slide cylinders
- Industrial cylinders
- Components and accessories
- Cabinet locks



**BURG** F. W. Lüling KG

Postfach 148 • D-58289 Wetter (Germany) • Hegestraße 6–16 • D-58300 Wetter (Germany)  
Fon +49 (0) 23 35/63 08-0 • Fax +49 (0) 23 35/63 08-999 • info@burg.de • www.burg.de